

**INFORMACIÓN ESTADÍSTICA  
DEL HOSPITAL SANTA ROSA  
FRENTE A LA EPIDEMIA COVID19**

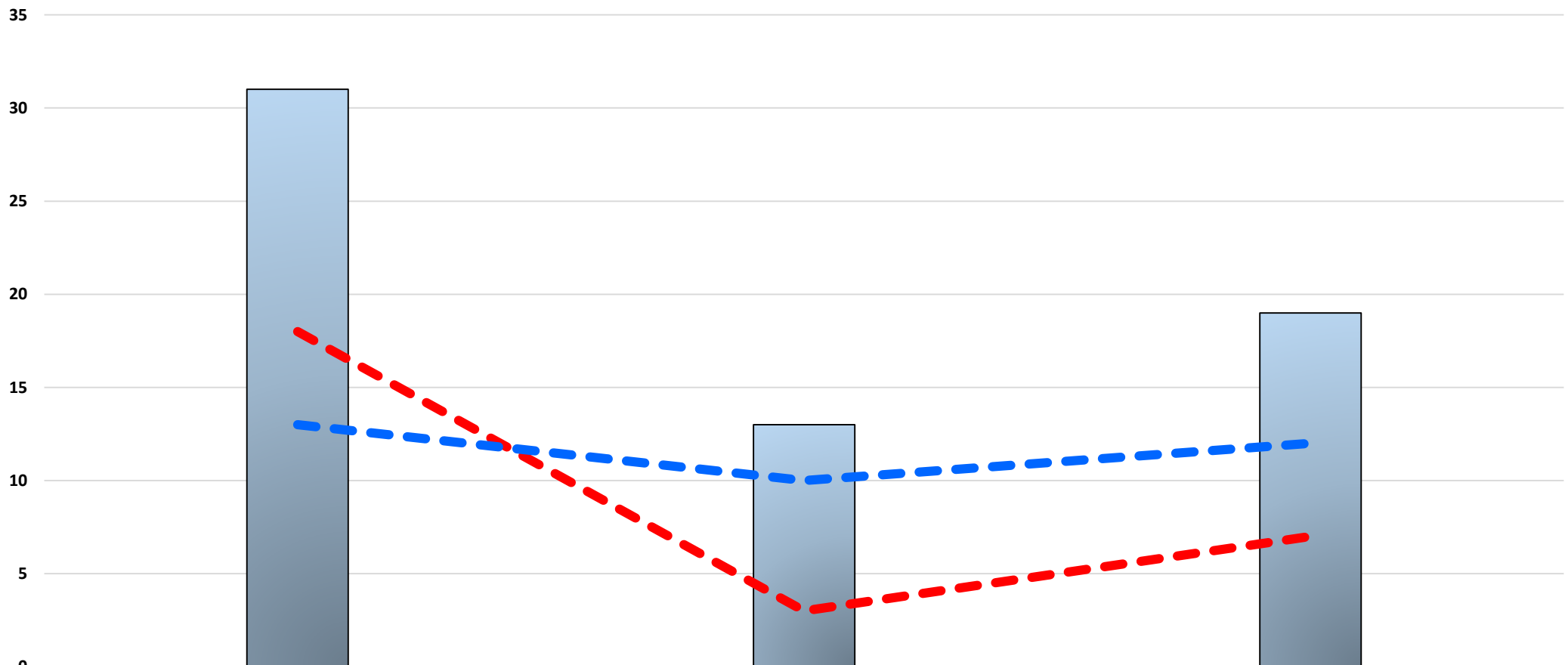
**UNIDAD DE CUIDADOS INTENSIVOS (UCI)**

**I TRIMESTRE 2022**

**TOTAL**  
**63**

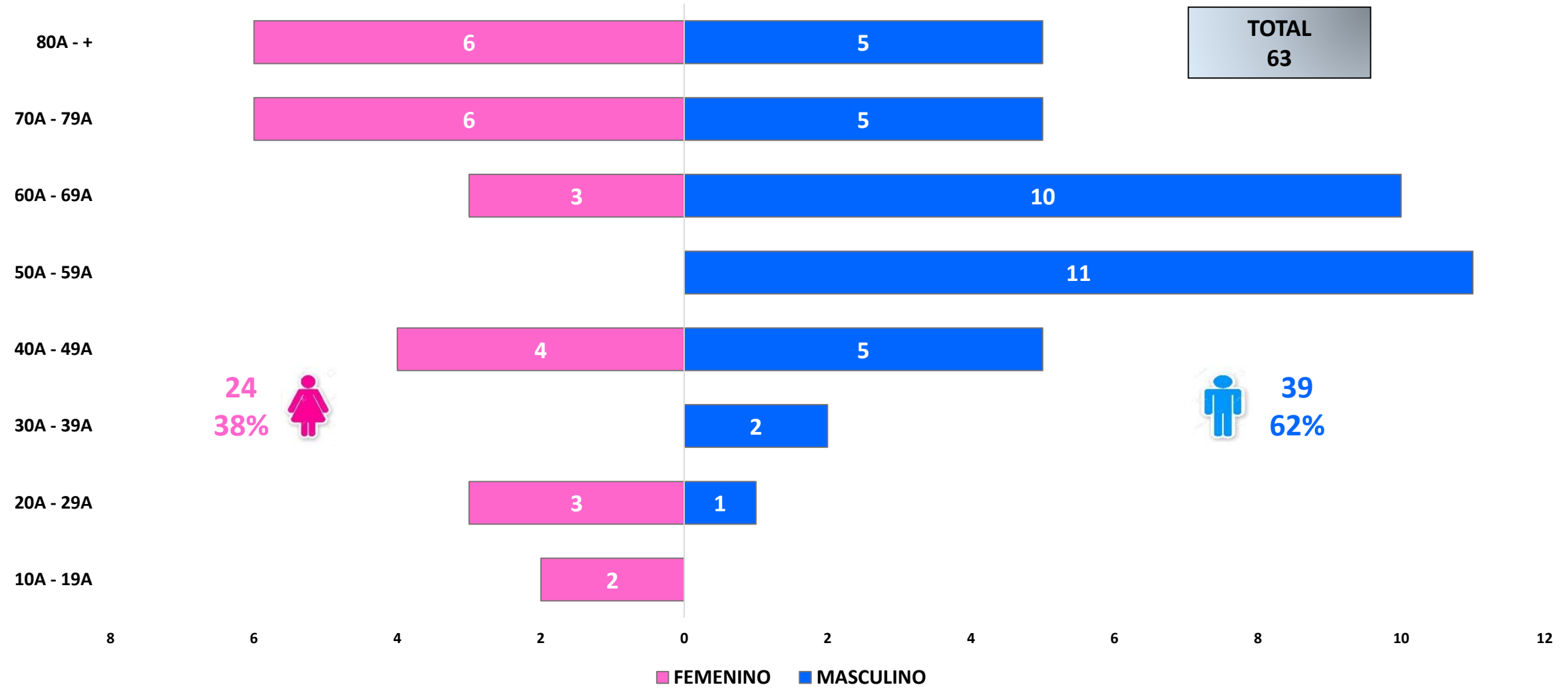
**NO COVID**  
**35 (56%)**

**COVID**  
**28 (44%)**



	ENE	FEB	MAR
<b>TOTAL</b>	<b>31</b>	<b>13</b>	<b>19</b>
<b>COVID</b>	<b>18</b>	<b>3</b>	<b>7</b>
<b>NO COVID</b>	<b>13</b>	<b>10</b>	<b>12</b>

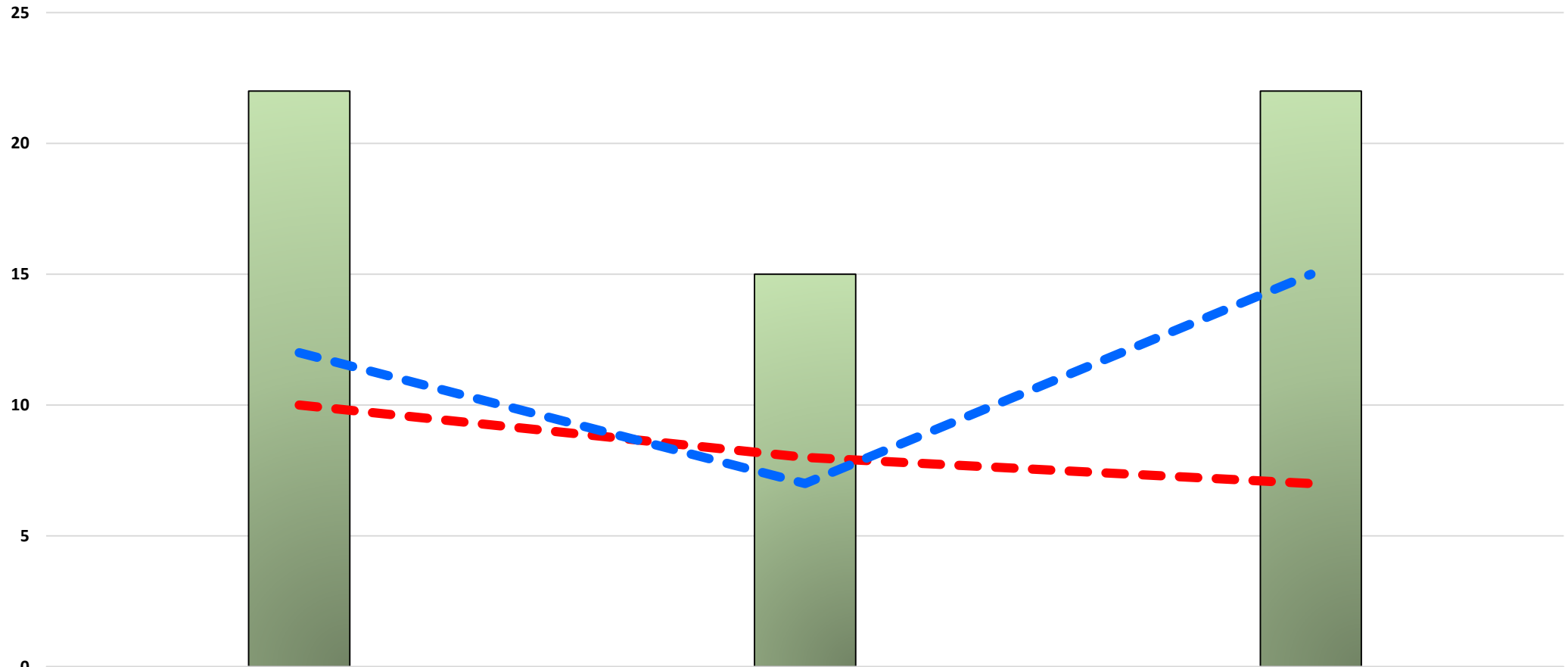
## PIRÁMIDE POBLACIONAL: INGRESOS A LA UCI I TRIMESTRE 2022






**TOTAL**  
59

**NO COVID**  
34 (58%)

**COVID**  
25 (42%)



	ENE	FEB	MAR
 TOTAL	22	15	22
 COVID	10	8	7
 NO COVID	12	7	15

# HOSPITAL SANTA ROSA - PUEBLO LIBRE

## EGRESOS MENSUALES DE LA UCI, SEGÚN ALTA MÉDICA

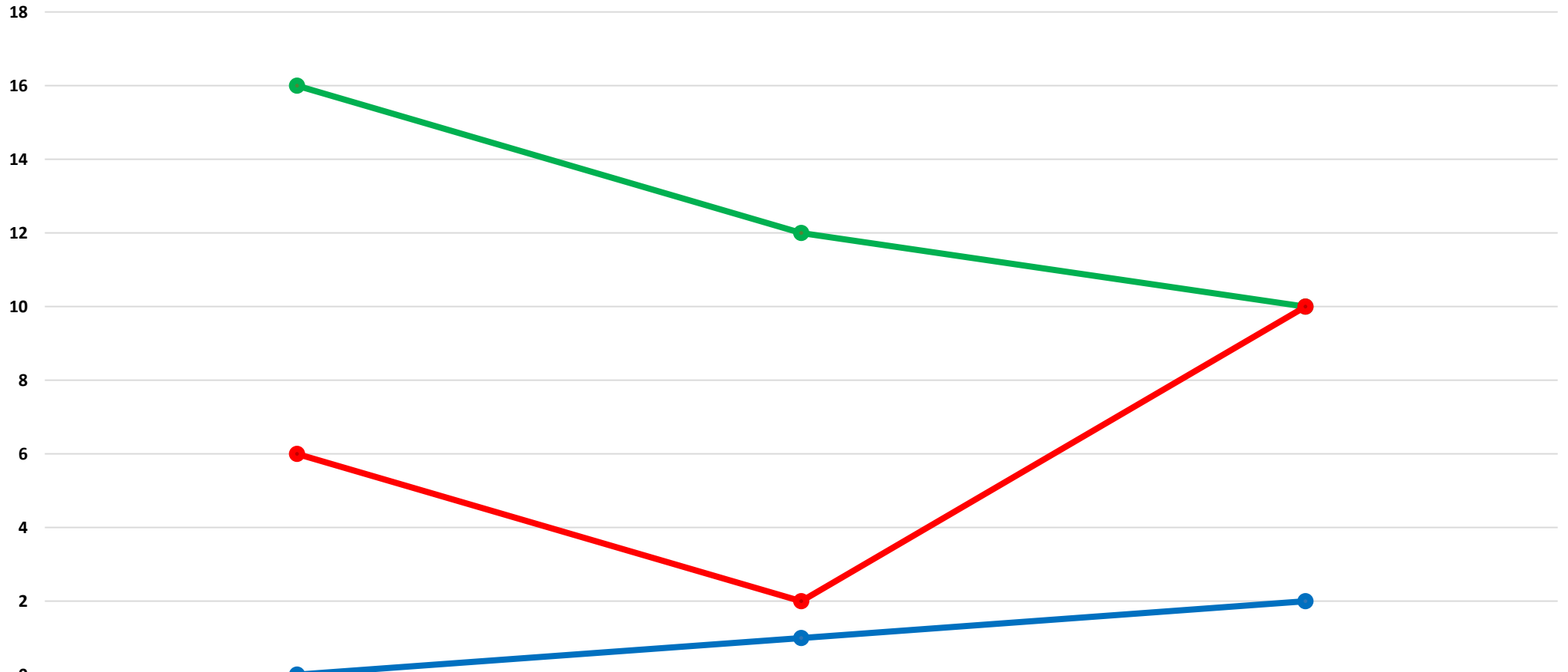
### I TRIMESTRE 2022

**TOTAL**  
**59**

**TRASLADO**  
**38 (64%)**

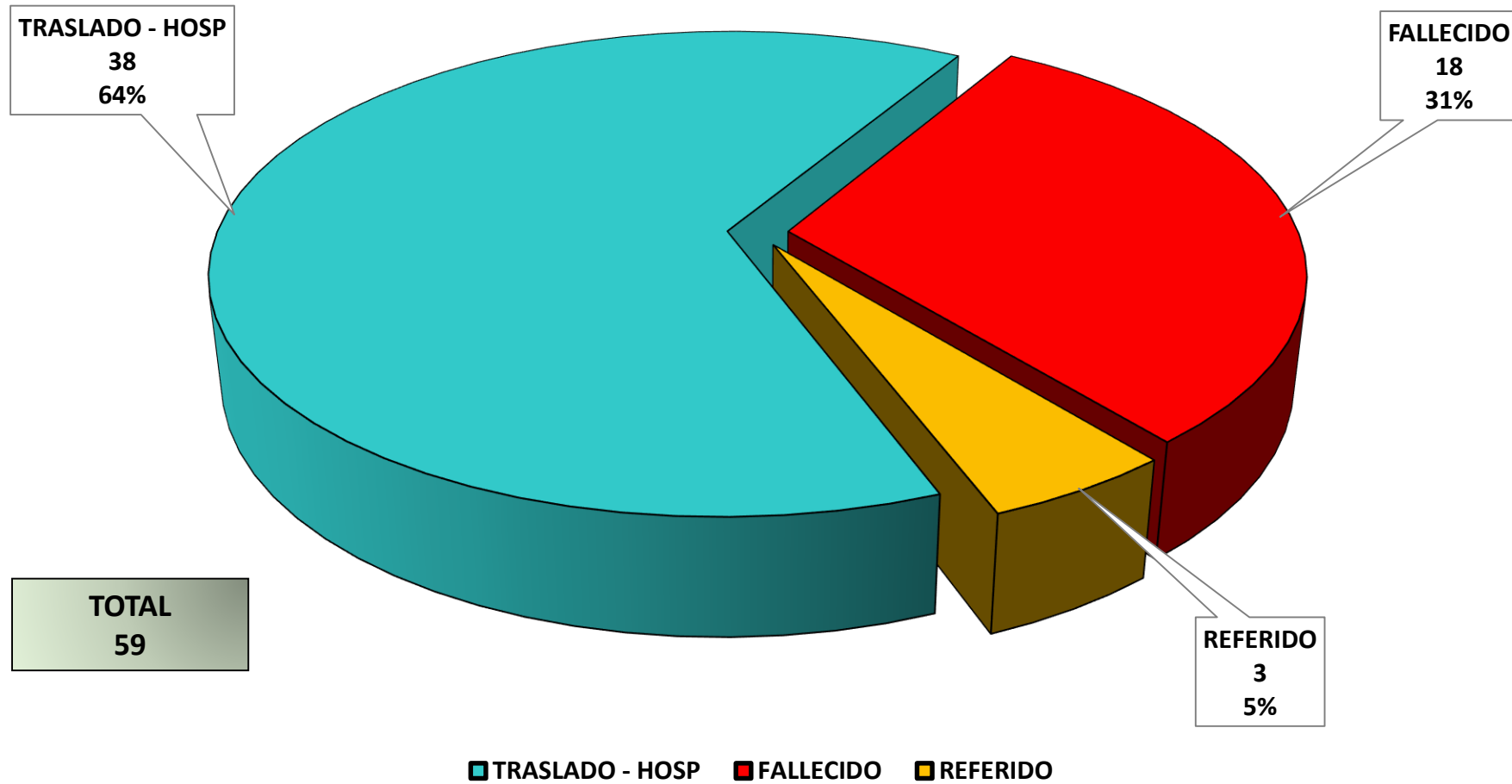
**FALLECIDO**  
**18 (31%)**

**REFERIDO**  
**3 (5%)**



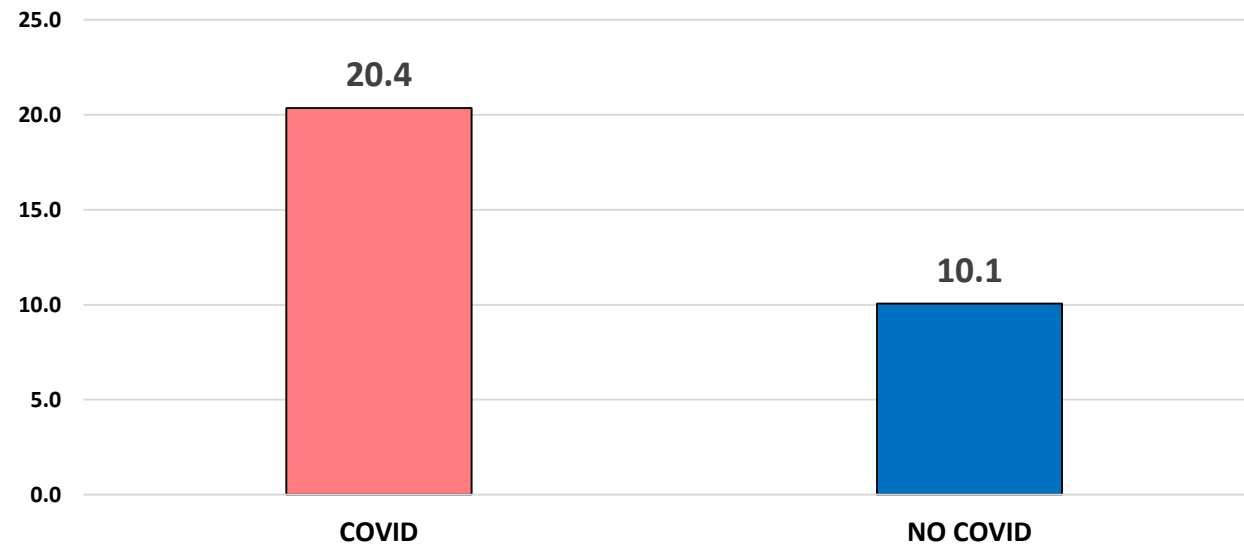
	ENE	FEB	MAR
● TRASLADO - HOSP	16	12	10
● FALLECIDO	6	2	10
● REFERIDO	0	1	2

## EGRESOS DE LA UCI, SEGÚN ALTA MÉDICA I TRIMESTRE 2022



## PROMEDIO DE PERMANENCIA CAMA EN LA UCI, SEGÚN TIPO I TRIMESTRE 2022

TIPO PACIENTE	INGRESOS	EGRESOS	ESTANCIA	PROM. PERM. CAMA
COVID	28	25	509	20.4
NO COVID	35	34	342	10.1
TOTAL	63	59	851	14.4



# HOSPITAL SANTA ROSA - PUEBLO LIBRE

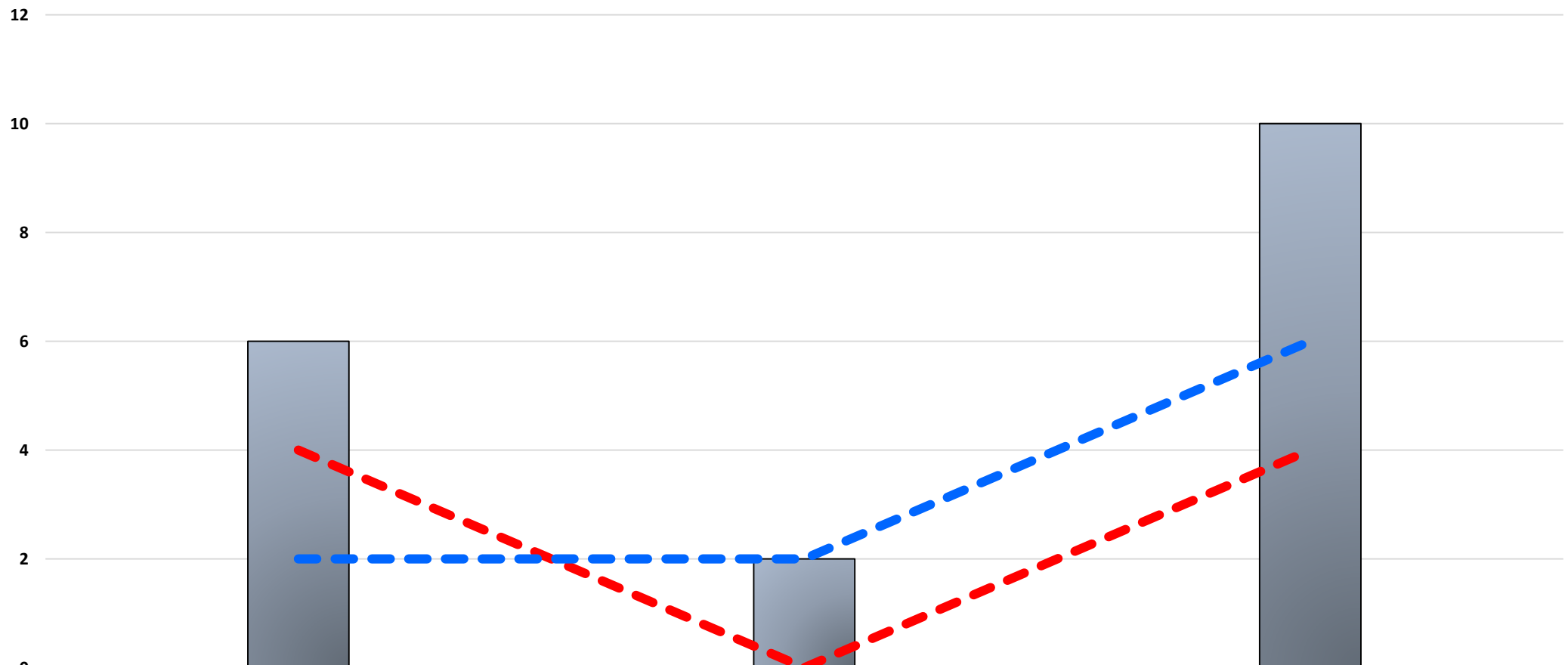
## NÚMERO DE FALLECIDOS MENSUALES DE LA UCI, SEGÚN TIPO

### I TRIMESTRE 2022

**TOTAL**  
18

**NO COVID**  
10 (56%)

**COVID**  
8 (44%)



	ENE	FEB	MAR
<b>TOTAL</b>	6	2	10
<b>COVID</b>	4	0	4
<b>NO COVID</b>	2	2	6